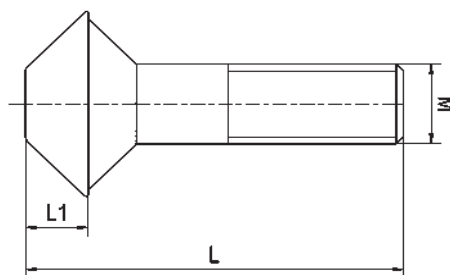


# ZPS零点定位系统

## 锁紧销固定螺栓

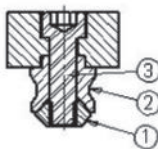
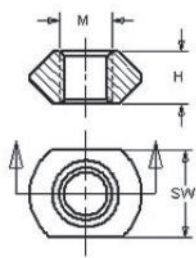
强度等级 10.9

用于底板安装型和台面安装型锁紧模块



件号	尺寸系列	M	L	L1	g
306092	K 5	M 6	25	3.4	18
303578	K10	M 8	37	6.0	30
303222	K20	M12	54	9.0	70
303230	K40	M16	69	10.0	130

## 锁紧销螺栓螺母



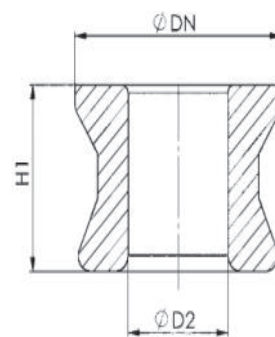
1 = 锁紧销压紧螺母  
2 = 锁紧销  
3 = 锁紧销螺栓

件号	尺寸系列	M	SW	H	重量 g
429969	K5	M6	10	6	3
429985	K10	M8	14	8	8
430009	K20	M12	21	14	26
430025	K40	M16	28	17	50

## 浮动锁紧销

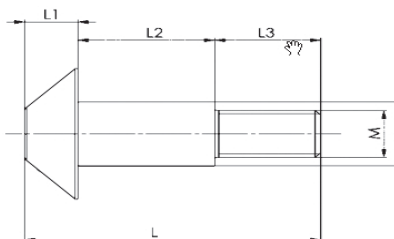


件号	尺寸系列	ØDN	ØD2	H1	g
340059	K10	21.8	12	16	25
305912	K20	31.8	15.5	23	80
426882	K40	39.8	20	29	160



## 锁紧销固定螺栓

强度等级 10.9



件号	尺寸系列	ØD2	M	L	L1	L2	L3	g
340034	K10	11.0	M8	35	6	16.1	12.9	24
305938	K20	13.5	M10	50	9	23.1	17.9	55
426908	K40	17.0	M12	59	10	29.1	19.9	100

